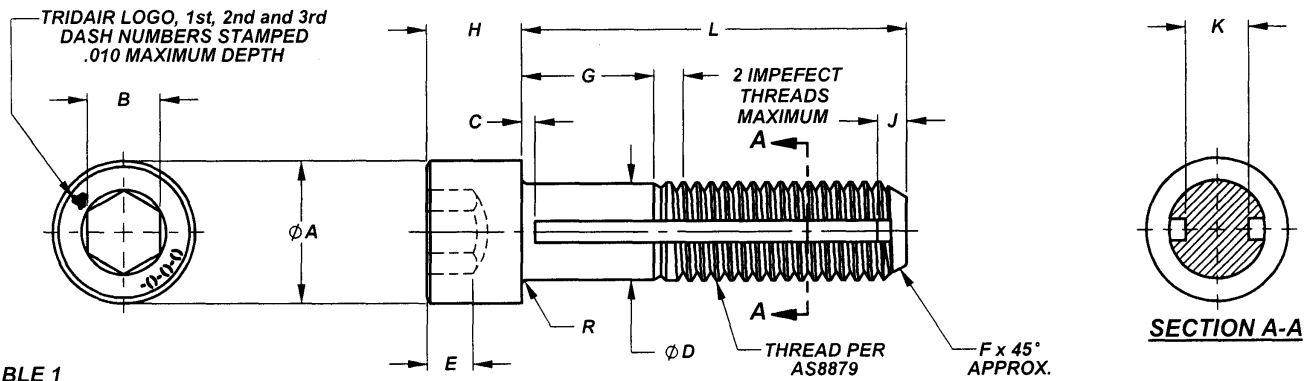


Camloc . Delron . Deutsch . Huck . K-Fast . Kaynar . Microdot . RAM . Rosan . Screwcorp . Tridair . Voi - Shan



MANUFACTURE OF THE PROPRIETARY PARTS SHOWN HERE WITHOUT WRITTEN CONSENT IS ABSOLUTELY PROHIBITED

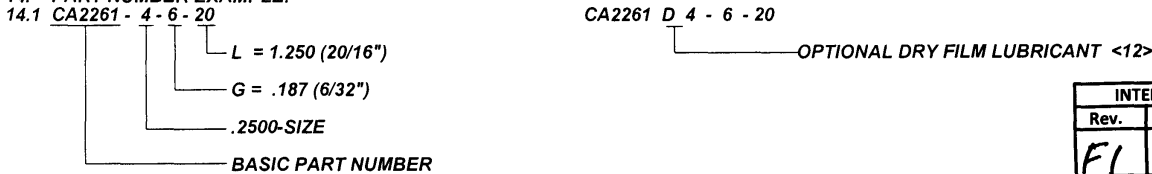
TABLE 1

FIRST DASH NUMBER	THREAD SIZE	Ø A	B NOM.	C MAX	Ø D	E MIN	F	H	J	K MIN	R RAD	ULTIMATE TENSILE STRENGTH MINIMUM (CALCULATED)	ULTIMATE SINGLE SHEAR STRENGTH MINIMUM (CALCULATED)
-06	.1380-32 UNJC-3A	.226 .218	.109	.050	.1375 .1365	.064	.030	.138 .134	.040	.067	.015 .005	1,060 LBS.	640 LBS.
-10	.1900-32 UNJF-3A	.312 .303	.156	.050	.1895 .1885	.090	.030	.190 .185	.040	.108	.020 .010	2,425 LBS.	1,450 LBS.
-4	.2500-28 UNJF-3A	.375 .365	.188	.050	.2495 .2485	.120	.035	.250 .244	.040	.162	.020 .010	4,625 LBS.	2,775 LBS.
-5	.3125-24 UNJF-3A	.469 .457	.250	.065	.3120 .3110	.151	.040	.312 .306	.050	.205	.020 .010	7,400 LBS.	4,425 LBS.
-6	.3750-24 UNJF-3A	.562 .550	.312	.065	.3745 .3735	.182	.040	.375 .368	.050	.268	.025 .015	11,300 LBS.	7,300 LBS.

NOTES; UNLESS OTHERWISE SPECIFIED:

1. MATERIAL: A286 CRES PER AMS5731, AMS5732 OR AMS5737.
 2. HEAT TREAT: PER AMS5737, AGE ONLY, TO ACHIEVE 160,000 PSI MINIMUM TENSILE. (AMS2759)
 3. FINISH:
 - 3.1 STANDARD - PASSIVATED PER AMS2700.
 - 3.2 OPTIONAL - DRY FILM LUBRICANT PER AMS5272, TYPE I (IAW BOEING MUA NUMBER 1001-0036) DESIGNATED BY LETTER "D" IN LIEU OF 1st DASH.
 4. HEAD: HEX SOCKET HEAD CAP SCREW PER ANSI B18.3, PLAIN, NOT KNURLED.
 5. SCREW TO BE USED WITH CA2210-()R RETAINING RING TO CAPTIVATE TO PANEL.
 6. PANEL PREPARATION: REFER TO CAL-STD-0260 DRAWING.
 7. INSTALLATION: REFER TO ALCOA DRAWING NUMBER CA2210T-().
 8. TOLERANCES, UNLESS OTHERWISE INDICATED, DECIMALS: .XX ±.02, XXX ±.010 ANGLES: ±2°.
 9. QUALITY CONFORMANCE INSPECTION SHALL BE PER FF-S-86E, PARAGRAPH 4, WITH THE FOLLOWING EXCEPTIONS:
 - 9.1 HARDNESS TESTING PER PARAGRAPH 4.3.1.1 SHALL CONFIRM Rc 36 MINIMUM WITHOUT A MAXIMUM LIMIT.
 - 9.2 TENSILE TESTING TO BE LIMITED TO AXIAL ONLY PER PARAGRAPH 4.3.1.2 EXCEPT TEST PER NASM1314-B. MINIMUM ULTIMATE TENSILE STRENGTH SHALL BE AS SHOWN IN TABLE 1 HEREIN.
 - 9.3 DISCONTINUITY INSPECTION TEST SHALL BE PER ASTM E1417 PENETRANT INSPECTION FOR ALL SIZES.
 - 9.4 SHEAR TESTING IS REQUIRED. TEST PER NASM1312-4. APPLY LOAD ACROSS SLOTS. MINIMUM ULTIMATE SHEAR STRENGTH SHALL BE AS SHOWN IN TABLE 1 HEREIN.
 - 9.4.1 PREPARE SHEAR TEST PLATES WITH SCREW HOLES PER CAL-STD-0260. COUNTERBORE TOP PLATE ONLY. COUNTERBORE TO FACE AWAY FROM SCREW HEAD DURING SHEAR TEST.
 - 9.4.2 SAMPLING FOR SHEAR TESTING SHALL BE PER FF-S-86E, PARAGRAPH 4.2.3 OR 4.2.7 AS APPLICABLE.
 10. PACKAGING:
 - 10.1 PACKAGE PER ASTM-D3951.
 - 10.2 CONTAINER MARKING PER FED-STD-123,
 11. LONGER GRIPS (IN 1/32" INCREMENTS) AND LONGER LENGTHS (IN 1/16" INCREMENTS) THAN ARE SHOWN IN TABLES 2 THRU 6 MAY BE ORDERED.
- <12> DIMENSIONS APPLY BEFORE LUBRICANT.
- <13> -06 DIAMETER PARTS MAY BE MACHINED.

14. PART NUMBER EXAMPLE:



INTERIM DOCUMENT REVISION		
Rev.	Date	DAF#
F1	10/8/2018	117431

APPROVED DATE 7 APR 92 REV. LETTER AND DATE F 17 NOV 10 DAF NUMBER DAF 94655	CURRENT DESIGN ACTIVITY: ARCONIC Arconic Fastening Systems TRIDAIR PRODUCTS 3000 W. LOMITA BLVD. TORRANCE, CA 90505	TITLE: SCREW, SOCKET HEAD, CAPTIVE, CRES UNLESS OTHERWISE SPECIFIED DIMENSIONS ARE IN INCHES & ASME Y14.5M TOLERANCES: ANGLES = ±3° DECIMALS .XX = ±.02 .XXX = ±.010	CURRENT DESIGN ACTIVITY: CAGE CODE: 29372 SALES DRAWING NO. CA2261-()-()-() SHEET 1 OF 4
---	--	--	---

PROJECT NUMBER: 98-017

THIS DRAWING EMBODIES A CONFIDENTIAL, PROPRIETARY DESIGN & ALL DESIGN, MANUFACTURING PRODUCTION, USE & SALE RIGHTS REGARDING SAME ARE EXPRESSLY RESERVED.

TABLE 2

	G GRIP									L LENGTH
	.062	.094	.125	.156	.187	.218	.250	.281	.312	
.1380-32 SIZE FIRST DASH NUMBER -06	-2-7	-3-7	-4-7	-5-7	-6-7	-7-7	-8-7	-9-7	-10-7	.437
	-2-8	-3-8	-4-8	-5-8	-6-8	-7-8	-8-8	-9-8	-10-8	.500
	-2-9	-3-9	-4-9	-5-9	-6-9	-7-9	-8-9	-9-9	-10-9	.562
	-2-10	-3-10	-4-10	-5-10	-6-10	-7-10	-8-10	-9-10	-10-10	.625
	-2-11	-3-11	-4-11	-5-11	-6-11	-7-11	-8-11	-9-11	-10-11	.687
	-2-12	-3-12	-4-12	-5-12	-6-12	-7-12	-8-12	-9-12	-10-12	.750
	-2-13	-3-13	-4-13	-5-13	-6-13	-7-13	-8-13	-9-13	-10-13	.812
	-2-14	-3-14	-4-14	-5-14	-6-14	-7-14	-8-14	-9-14	-10-14	.875
	-2-15	-3-15	-4-15	-5-15	-6-15	-7-15	-8-45	-9-15	-10-15	.937
	-2-16	-3-16	-4-16	-5-16	-6-16	-7-16	-8-16	-9-16	-10-16	1.000
	-2-17	-3-17	-4-17	-5-17	-6-17	-7-17	-8-17	-9-17	-10-17	1.062
	-2-18	-3-18	-4-18	-5-18	-6-18	-7-18	-8-18	-9-18	-10-18	1.125
	-2-19	-3-19	-4-19	-5-19	-6-19	-7-19	-8-19	-9-19	-10-19	1.187
	-2-20	-3-20	-4-20	-5-20	-6-20	-7-20	-8-20	-9-20	-10-20	1.250
	-2-21	-3-21	-4-21	-5-21	-6-21	-7-21	-8-21	-9-21	-10-21	1.312
	-2-22	-3-22	-4-22	-5-22	-6-22	-7-22	-8-22	-9-22	-10-22	1.375
	-2-23	-3-23	-4-23	-5-23	-6-23	-7-23	-8-23	-9-23	-10-23	1.437
	-2-24	-3-24	-4-24	-5-24	-6-24	-7-24	-8-24	-9-24	-10-24	1.500
	-2-25	-3-25	-4-25	-5-25	-6-25	-7-25	-8-25	-9-25	-10-25	1.562
	-2-26	-3-26	-4-26	-5-26	-6-26	-7-26	-8-26	-9-26	-10-26	1.625
	-2-27	-3-27	-4-27	-5-27	-6-27	-7-27	-8-27	-9-27	-10-27	1.687
	-2-28	-3-28	-4-28	-5-28	-6-28	-7-28	-8-28	-9-28	-10-28	1.750


TABLE 3

	G GRIP									L LENGTH
	.062	.094	.125	.156	.187	.218	.250	.281	.312	
.1900-32 SIZE FIRST DASH NUMBER -10	-2-7	-3-7	-4-7	-5-7	-6-7	-7-7	-8-7	-9-7	-10-7	.437
	-2-8	-3-8	-4-8	-5-8	-6-8	-7-8	-8-8	-9-8	-10-8	.500
	-2-9	-3-9	-4-9	-5-9	-6-9	-7-9	-8-9	-9-9	-10-9	.562
	-2-10	-3-10	-4-10	-5-10	-6-10	-7-10	-8-10	-9-10	-10-10	.625
	-2-11	-3-11	-4-11	-5-11	-6-11	-7-11	-8-11	-9-11	-10-11	.687
	-2-12	-3-12	-4-12	-5-12	-6-12	-7-12	-8-12	-9-12	-10-12	.750
	-2-13	-3-13	-4-13	-5-13	-6-13	-7-13	-8-13	-9-13	-10-13	.812
	-2-14	-3-14	-4-14	-5-14	-6-14	-7-14	-8-14	-9-14	-10-14	.875
	-2-15	-3-15	-4-15	-5-15	-6-15	-7-15	-8-45	-9-15	-10-15	.937
	-2-16	-3-16	-4-16	-5-16	-6-16	-7-16	-8-16	-9-16	-10-16	1.000
	-2-17	-3-17	-4-17	-5-17	-6-17	-7-17	-8-17	-9-17	-10-17	1.062
	-2-18	-3-18	-4-18	-5-18	-6-18	-7-18	-8-18	-9-18	-10-18	1.125
	-2-19	-3-19	-4-19	-5-19	-6-19	-7-19	-8-19	-9-19	-10-19	1.187
	-2-20	-3-20	-4-20	-5-20	-6-20	-7-20	-8-20	-9-20	-10-20	1.250
	-2-21	-3-21	-4-21	-5-21	-6-21	-7-21	-8-21	-9-21	-10-21	1.312
	-2-22	-3-22	-4-22	-5-22	-6-22	-7-22	-8-22	-9-22	-10-22	1.375
	-2-23	-3-23	-4-23	-5-23	-6-23	-7-23	-8-23	-9-23	-10-23	1.437
	-2-24	-3-24	-4-24	-5-24	-6-24	-7-24	-8-24	-9-24	-10-24	1.500
	-2-25	-3-25	-4-25	-5-25	-6-25	-7-25	-8-25	-9-25	-10-25	1.562
	-2-26	-3-26	-4-26	-5-26	-6-26	-7-26	-8-26	-9-26	-10-26	1.625
	-2-27	-3-27	-4-27	-5-27	-6-27	-7-27	-8-27	-9-27	-10-27	1.687
	-2-28	-3-28	-4-28	-5-28	-6-28	-7-28	-8-28	-9-28	-10-28	1.750

MANUFACTURE OF THE PROPRIETARY PARTS SHOWN HERE WITHOUT WRITTEN CONSENT IS ABSOLUTELY PROHIBITED

THIS DRAWING EMBODIES A CONFIDENTIAL, PROPRIETARY DESIGN & ALL DESIGN, MANUFACTURING PRODUCTION, USE & SALE RIGHTS REGARDING SAME ARE EXPRESSLY RESERVED.

Rev.	10/8/2018
Date	
DAF#	117431

APPROVED DATE 7 APR 92	CURRENT DESIGN ACTIVITY:  ARCONIC Arconic Fastening Systems	TITLE: SCREW, SOCKET HEAD, CAPTIVE, CRES	CURRENT DESIGN ACTIVITY: CAGE CODE: 29372
REV. LETTER AND DATE F 17 NOV 10	TRIDAIR PRODUCTS 3000 W. LOMITA BLVD. TORRANCE, CA 90505	UNLESS OTHERWISE SPECIFIED DIMENSIONS ARE IN INCHES & ASME Y14.5M TOLERANCES:	SALES DRAWING NO. CA2261-()-()-()
DAF NUMBER DAF 04655		ANGLES = .3° DECIMALS .XX = .02 .XXX = .010	SHEET 2 OF 4

PROJECT NUMBER: 98-017

S42829

TABLE 4

	G GRIP									L LENGTH
	.062	.094	.125	.156	.187	.218	.250	.281	.312	
.2500-28 SIZE FIRST DASH NUMBER -4	-2-7	-3-7	-4-7	-5-7	-6-7	-7-7	-8-7	-----	-----	.437
	-2-8	-3-8	-4-8	-5-8	-6-8	-7-8	-8-8	-9-8	-10-8	.500
	-2-9	-3-9	-4-9	-5-9	-6-9	-7-9	-8-9	-9-9	-10-9	.562
	-2-10	-3-10	-4-10	-5-10	-6-10	-7-10	-8-10	-9-10	-10-10	.625
	-2-11	-3-11	-4-11	-5-11	-6-11	-7-11	-8-11	-9-11	-10-11	.687
	-2-12	-3-12	-4-12	-5-12	-6-12	-7-12	-8-12	-9-12	-10-12	.750
	-2-13	-3-13	-4-13	-5-13	-6-13	-7-13	-8-13	-9-13	-10-13	.812
	-2-14	-3-14	-4-14	-5-14	-6-14	-7-14	-8-14	-9-14	-10-14	.875
	-2-15	-3-15	-4-15	-5-15	-6-15	-7-15	-8-45	-9-15	-10-15	.937
	-2-16	-3-16	-4-16	-5-16	-6-16	-7-16	-8-16	-9-16	-10-16	1.000
	-2-17	-3-17	-4-17	-5-17	-6-17	-7-17	-8-17	-9-17	-10-17	1.062
	-2-18	-3-18	-4-18	-5-18	-6-18	-7-18	-8-18	-9-18	-10-18	1.125
	-2-19	-3-19	-4-19	-5-19	-6-19	-7-19	-8-19	-9-19	-10-19	1.187
	-2-20	-3-20	-4-20	-5-20	-6-20	-7-20	-8-20	-9-20	-10-20	1.250
	-2-21	-3-21	-4-21	-5-21	-6-21	-7-21	-8-21	-9-21	-10-21	1.312
	-2-22	-3-22	-4-22	-5-22	-6-22	-7-22	-8-22	-9-22	-10-22	1.375
	-2-23	-3-23	-4-23	-5-23	-6-23	-7-23	-8-23	-9-23	-10-23	1.437
	-2-24	-3-24	-4-24	-5-24	-6-24	-7-24	-8-24	-9-24	-10-24	1.500
	-2-25	-3-25	-4-25	-5-25	-6-25	-7-25	-8-25	-9-25	-10-25	1.562
	-2-26	-3-26	-4-26	-5-26	-6-26	-7-26	-8-26	-9-26	-10-26	1.625
	-2-27	-3-27	-4-27	-5-27	-6-27	-7-27	-8-27	-9-27	-10-27	1.687
	-2-28	-3-28	-4-28	-5-28	-6-28	-7-28	-8-28	-9-28	-10-28	1.750


TABLE 5

									L LENGTH
	.094	.125	.156	.187	.218	.250	.281	.312	
.3125-24 SIZE FIRST DASH NUMBER -5	-3-7	-4-7	-5-7	-6-7	-7-7	-----	-----	-----	.437
	-3-8	-4-8	-5-8	-6-8	-7-8	-8-8	-9-8	-----	.500
	-3-9	-4-9	-5-9	-6-9	-7-9	-8-9	-9-9	-10-9	.562
	-3-10	-4-10	-5-10	-6-10	-7-10	-8-10	-9-10	-10-10	.625
	-3-11	-4-11	-5-11	-6-11	-7-11	-8-11	-9-11	-10-11	.687
	-3-12	-4-12	-5-12	-6-12	-7-12	-8-12	-9-12	-10-12	.750
	-3-13	-4-13	-5-13	-6-13	-7-13	-8-13	-9-13	-10-13	.812
	-3-14	-4-14	-5-14	-6-14	-7-14	-8-14	-9-14	-10-14	.875
	-3-15	-4-15	-5-15	-6-15	-7-15	-8-45	-9-15	-10-15	.937
	-3-16	-4-16	-5-16	-6-16	-7-16	-8-16	-9-16	-10-16	1.000
	-3-17	-4-17	-5-17	-6-17	-7-17	-8-17	-9-17	-10-17	1.062
	-3-18	-4-18	-5-18	-6-18	-7-18	-8-18	-9-18	-10-18	1.125
	-3-19	-4-19	-5-19	-6-19	-7-19	-8-19	-9-19	-10-19	1.187
	-3-20	-4-20	-5-20	-6-20	-7-20	-8-20	-9-20	-10-20	1.250
	-3-21	-4-21	-5-21	-6-21	-7-21	-8-21	-9-21	-10-21	1.312
	-3-22	-4-22	-5-22	-6-22	-7-22	-8-22	-9-22	-10-22	1.375
	-3-23	-4-23	-5-23	-6-23	-7-23	-8-23	-9-23	-10-23	1.437
	-3-24	-4-24	-5-24	-6-24	-7-24	-8-24	-9-24	-10-24	1.500
	-3-25	-4-25	-5-25	-6-25	-7-25	-8-25	-9-25	-10-25	1.562
	-3-26	-4-26	-5-26	-6-26	-7-26	-8-26	-9-26	-10-26	1.625
	-3-27	-4-27	-5-27	-6-27	-7-27	-8-27	-9-27	-10-27	1.687
	-3-28	-4-28	-5-28	-6-28	-7-28	-8-28	-9-28	-10-28	1.750

Rev.	Date	DAF#
F1	10/8/2018	117431

MANUFACTURE OF THE PROPRIETARY PARTS SHOWN HERE WITHOUT WRITTEN CONSENT IS ABSOLUTELY PROHIBITED

THIS DRAWING EMBODIES A CONFIDENTIAL, PROPRIETARY DESIGN & ALL DESIGN, MANUFACTURING PRODUCTION, USE & SALE RIGHTS REGARDING SAME ARE EXPRESSLY RESERVED.

APPROVED DATE 7 APR 92	CURRENT DESIGN ACTIVITY:  ARCONIC Arconic Fastening Systems	TITLE: SCREW, SOCKET HEAD, CAPTIVE, CRES	CURRENT DESIGN ACTIVITY: CAGE CODE: 29372
REV. LETTER AND DATE F 17 NOV 10	TRIDAIR PRODUCTS 3000 W. LOMITA BLVD. TORRANCE, CA 90505	UNLESS OTHERWISE SPECIFIED DIMENSIONS ARE IN INCHES & ASME Y14.5M TOLERANCES:	SALES DRAWING NO. CA2261-()-()-()
DAF NUMBER DAF-94655- MP		ANGLES = ±3° DECIMALS .XX = ±.02 .XXX = ±.010	SHEET 3 OF 4

PROJECT NUMBER: 98-017

S42829

TABLE 6


									L
	.094	.125	.156	.187	.218	.250	.281	.312	LENGTH
	-3-7	-4-7	-5-7	-6-7	-7-7	-----	-----	-----	.437
	-3-8	-4-8	-5-8	-6-8	-7-8	-8-8	-9-8	-----	.500
	-3-9	-4-9	-5-9	-6-9	-7-9	-8-9	-9-9	-10-9	.562
	-3-10	-4-10	-5-10	-6-10	-7-10	-8-10	-9-10	-10-10	.625
	-3-11	-4-11	-5-11	-6-11	-7-11	-8-11	-9-11	-10-11	.687
	-3-12	-4-12	-5-12	-6-12	-7-12	-8-12	-9-12	-10-12	.750
	-3-13	-4-13	-5-13	-6-13	-7-13	-8-13	-9-13	-10-13	.812
	-3-14	-4-14	-5-14	-6-14	-7-14	-8-14	-9-14	-10-14	.875
	-3-15	-4-15	-5-15	-6-15	-7-15	-8-15	-9-15	-10-15	.937
	-3-16	-4-16	-5-16	-6-16	-7-16	-8-16	-9-16	-10-16	1.000
	-3-17	-4-17	-5-17	-6-17	-7-17	-8-17	-9-17	-10-17	1.062
	-3-18	-4-18	-5-18	-6-18	-7-18	-8-18	-9-18	-10-18	1.125
	-3-19	-4-19	-5-19	-6-19	-7-19	-8-19	-9-19	-10-19	1.187
	-3-20	-4-20	-5-20	-6-20	-7-20	-8-20	-9-20	-10-20	1.250
	-3-21	-4-21	-5-21	-6-21	-7-21	-8-21	-9-21	-10-21	1.312
	-3-22	-4-22	-5-22	-6-22	-7-22	-8-22	-9-22	-10-22	1.375
	-3-23	-4-23	-5-23	-6-23	-7-23	-8-23	-9-23	-10-23	1.437
	-3-24	-4-24	-5-24	-6-24	-7-24	-8-24	-9-24	-10-24	1.500
	-3-25	-4-25	-5-25	-6-25	-7-25	-8-25	-9-25	-10-25	1.562
	-3-26	-4-26	-5-26	-6-26	-7-26	-8-26	-9-26	-10-26	1.625
	-3-27	-4-27	-5-27	-6-27	-7-27	-8-27	-9-27	-10-27	1.687
	-3-28	-4-28	-5-28	-6-28	-7-28	-8-28	-9-28	-10-28	1.750

.3750-24 SIZE FIRST DASH NUMBER -6

MANUFACTURE OF THE PROPRIETARY PARTS SHOWN HERE WITHOUT WRITTEN CONSENT IS ABSOLUTELY PROHIBITED

THIS DRAWING EMBODIES A CONFIDENTIAL, PROPRIETARY DESIGN & ALL DESIGN, MANUFACTURING PRODUCTION, USE & SALE RIGHTS REGARDING SAME ARE EXPRESSLY RESERVED.

INTERIM DOCUMENT REVISION		
Rev.	Date	DAF#
F1	10/8/2018	117431

APPROVED DATE 7 APR 92	CURRENT DESIGN ACTIVITY:  ARCONIC Arconic Fastening Systems	TITLE: SCREW, SOCKET HEAD, CAPTIVE, CRES	CURRENT DESIGN ACTIVITY: CAGE CODE: 29372
REV. LETTER AND DATE F 17 NOV 10	TRIDAIR PRODUCTS 3000 W. LOMITA BLVD. TORRANCE, CA 90505	UNLESS OTHERWISE SPECIFIED DIMENSIONS ARE IN INCHES & ASME Y14.5M TOLERANCES:	SALES DRAWING NO. CA2261-()-()-()
DAF NUMBER DAF 94655		ANGLES = ±3° DECIMALS .XX = ±.02 .XXX = ±.010	SHEET 4 OF 4

S42829

PROJECT NUMBER: 98-017